

Submill Creek

FARMS



THE STEEL FOUNDATIONS

HEADLINER
Tour

THURSDAY
DECEMBER 30, 2021
L365AUCTIONS.COM
SALE CLOSSES AT 7PM CST

ENCORE
Tour

MONDAY
JANUARY 10, 2022
SCONLINESALES.COM
SALE CLOSSES AT 5PM CST

- *Limousin Offering* -

THE HEADLINER *Tour*

THURSDAY
DECEMBER 30, 2021

Selling 7 Registered Limousin & Lim-Flex Lots

Sale Hosted By: L365Auctions.com

Sale begins to close 12.30.21 at 5pm cst.

**View Videos and Complete Limousin Offering
Online at L365AUCTIONS.COM**

*Contact a Tubmill Creek representative or any
member of our marketing team with questions.*

MARKETING TEAM

SALE MANAGED BY:



MC Marketing Management
Kiley McKinna, 402.350.3447
Wiley Fanta, 320.287.0751

LIMOUSIN SALE CONSULTANTS:

Grassroots Consulting • Mark Smith, 515.229.5227

Helton Consulting • Bill Helton, 256.962.0256

SIMMENTAL SALE CONSULTANT:

Gary Staley, 937.508.8066

PHOTOGRAPHY: Alexis J O'boyle

- *Simmental Offering* -

THE ENCORE *Tour*

MONDAY
JANUARY 10, 2022

Selling 6 Registered SimSolution Lots

Sale Hosted By: SConlineSales.com

Sale opens 1.9.22 at 12 noon and begins to close 1.10.22 at 5pm cst.

**View Videos and Complete Simmental Offering
Online at SCONLINESALES.COM**

*Contact a Tubmill Creek representative or any
member of our marketing team with questions.*

THE TMCK PROGRAM

- > *All bulls have been parent verified.*
- > *Seller will assist in transportation arrangements.*
- > *1 year unconditional breeding season guarantee.*
- > *Comprehensive EPD's profiles, performance records and ultrasound data available.*
- > *Customer service guarantee - we fully stand behind our product and aim for 100% satisfaction.*



WELCOME TO TUBMILL CREEK FARMS

Kitty and I, along with our manager, Zeb O'Boyle and Kelly O'Boyle at Tubmill Creek Farms invite you to partake in both our Headliner and Encore Online Bull Sales. We cordially welcome you to drop by our hospitality and display area at the Cattlemen's Congress in Oklahoma City, Okla, where you will be able to view the entire Encore sale offering that will be campaigned at this event.

Our family-owned and operated breeding program spans two decades, and it's with great excitement to present what we firmly believe is our best to date and some of the best herd sire prospects in the entire breed. We hope you'll appreciate the genetic influence of our premier donors, elite herd sires and progressive A.I. program.

Our primary focus continues to be on the production of stout featured, sound structured cattle with strong genetic and numeric profiles that fit not only the needs of our loyal customers, but also the entire beef industry. In addition, at Tubmill Creek Farms, we recognize the importance customer satisfaction plays in the success of a seedstock provider. It goes without saying, we strive to make all business transactions straight forward, pleasant experiences.

All the bulls are fully guaranteed in accordance with the both North American Limousin Foundation and American Simmental Association and sale day supplement sheet information. Furthermore, if you would like to discuss financial arrangements reaching beyond cash or check due sale day, please do so prior to the sale.

If you have any questions, please feel free to contact myself (412-996-1715), Zeb (724-858-5669), Kelly (717-275-4443) or Kiley (402-350-3447). It's our goal to make the Tubmill Creek experience an enjoyable one.

Sincerely,
John & Kitty Goodish



JOHN and KITTY GOODISH



ZEB, ALEXIS and KELLY O'BOYLE

Tubmill Creek

FARMS

152 FLORIDA LANE

NEW FLORENCE, PA 15944

John & Kitty Goodish, owners 412-996-1715

Zeb O'Boyle, manager 724-858-5669

Kelly O'Boyle 717-275-4443

TUBMILLCREEKFARMS.COM





This offering of Limousin spring yearling bulls is simply our finest to date! A majority of these bulls feature genetics out of our elite donors, as well as the breed's finest numbered purebred A.I. sire - COLE Genesis. We're selling the best of our best, and it is with great pleasure we bring to you this exceptional set that we think will excel in production for both breeders' and commercial cattlemen alike.

THE STEEL FOUNDATIONS

HEADLINER

Tour

THURSDAY

DECEMBER 30, 2021

L365AUCTIONS.COM

LIMOUSIN
OFFERING



FOCUS

1 NIRVANA

TMCK 827J

1/30/2021 • LIM-FLEX(72/64) • HET BLK (T) • HOMO PLD (T) • LFM2397039

SIRE: HUNT CREDENTIALS 37C ET
COLE GENESIS 86G
 COLE MISS XRATED 354A

DAM: TMCK DUBLIN 322D
TMCK GIADA 704G
 TMCK ENTANGLED 532E

BW Adj. WW
 84 888

| | CE | BW | WW | YW | MK | CEM | SC | DC | CW | RE | YG | MB | \$MTI |
|--------|----|------|----|-----|----|-----|------|----|----|-----|------|-----|-------|
| EPD | 12 | -1.1 | 72 | 103 | 32 | 7 | 1.05 | 14 | 33 | .63 | -1.6 | .45 | 69.16 |
| % RANK | 40 | 15 | 40 | 60 | 1 | 35 | 45 | 35 | 45 | 70 | 60 | 10 | 15 |



FOCUS
4/19

2 SKYNARD

TMCK 824J

1/23/2021 • LIM-FLEX(49/44) • HOMO BLK (T) • HOMO PLD (T) • LFM2397037

SIRE: MAGS AVIATOR
CJSL CREED 5042C
 CJSL 2090Z

DAM: TMCK CASH FLOW 247C
TMCK GARNET 701G
 DHIL LUVLY 5026C ET

BW Adj. **WW**
78 **907**

| | CE | BW | WW | YW | MK | CEM | SC | DC | CW | RE | YG | MB | \$MTI |
|---------------|----|-----|----|-----|----|-----|-----|----|----|-----|-----|-----|-------|
| EPD | 4 | 0.8 | 89 | 152 | 29 | 9 | 0.4 | 14 | 43 | .64 | .07 | .54 | 76.45 |
| % RANK | 25 | 50 | 3 | 1 | 2 | 10 | 95 | 35 | 20 | 65 | >95 | 4 | 2 |



FOCUS
CRA

B LINKIN PARK TMCK 823J

1/22/2021 • PERCENTAGE(81/72) • HOMO BLK (T) • HOMO PLD (T) • NXM2397036

SIRE: HUNT CREDENTIALS 37C ET
COLE GENESIS 86G
COLE MISS XRATED 354A

DAM: TMCK CHAVEZ 245C
TMCK GALAXY 721G
TMCK SUNSHINE 521Z

BW Adj. **WW**
88 **797**

| | CE | BW | WW | YW | MK | CEM | SC | DC | CW | RE | YG | MB | \$MTI |
|---------------|----|-----|----|-----|----|-----|------|----|----|-----|------|-----|-------|
| EPD | 13 | 0.5 | 74 | 112 | 27 | 7 | 1.18 | 17 | 25 | .70 | -.21 | .28 | 64.23 |
| % RANK | 35 | 55 | 15 | 15 | 10 | 40 | 20 | 4 | 60 | 65 | 60 | 30 | 20 |





4 SANTANA

TMCK 828J

2/5/2021 • PUREBRED(93/79) • HET BLK (T) • HOMO PLD (T) • NPM2397040

SIRE: HUNT CREDENTIALS 37C ET
COLE GENESIS 86G
 COLE MISS XRATED 354A

DAM: TMCK AMERICAN MADE 353D
TMCK GLITZ 720G
 AUTO JACEY 680Y

FOCUS

BW Adj. **WW**
88 **816**

| | CE | BW | WW | YW | MK | CEM | SC | DC | CW | RE | YG | MB | \$MTI |
|---------------|----|-----|----|-----|----|-----|-----|----|----|-----|------|-----|-------|
| EPD | 12 | 1.9 | 84 | 123 | 24 | 6 | .65 | 14 | 29 | .92 | -.37 | .50 | 76.49 |
| % RANK | 40 | 65 | 2 | 3 | 25 | 50 | 45 | 45 | 25 | 90 | 95 | 1 | 1 |



5 AEROSMITH

TMCK 844J

3/4/2021 • PERCENTAGE(84/72) • HET BLK (T) • HOMO PLD (T) • NXM2397042

SIRE: HUNT CREDENTIALS 37C ET
COLE GENESIS 86G
 COLE MISS XRATED 354A

DAM: MAGS ANCHOR
AHCC MISS ANCHOR 6066D
 LVLS 9066U

BW Adj. **WW**
80 **814**

| | CE | BW | WW | YW | MK | CEM | SC | DC | CW | RE | YG | MB | \$MTI |
|---------------|----|------|----|-----|----|-----|------|----|----|-----|------|-----|-------|
| EPD | 16 | -0.2 | 68 | 101 | 25 | 10 | 1.25 | 19 | 34 | .59 | -.17 | .16 | 57.80 |
| % RANK | 10 | 40 | 30 | 30 | 15 | 3 | 15 | 1 | 30 | 80 | 70 | 50 | 45 |

FOCUS

6 JOURNEY

TMCK 831J

2/9/2021 • LIM-FLEX(46/40) • HOMO BLK (T) • HOMO PLD (T) • LFM2397041

SIRE: MAGS AVIATOR
CJSL CRED 5042J
 CJSL 2090Z

DAM: S A V PRIORITY 7283
TMCK GRIZZLY ROSE 700G
 AHCC MISS ANCHOR 6066D

BW Adj. **WW**
80 **829**

| | CE | BW | WW | YW | MK | CEM | SC | DC | CW | RE | YG | MB | \$MTI |
|---------------|----|-----|----|-----|----|-----|-----|----|----|-----|-----|-----|-------|
| EPD | 14 | 0.7 | 76 | 122 | 20 | 8 | .78 | 13 | 41 | .41 | .07 | .55 | 72.53 |
| % RANK | 15 | 45 | 25 | 20 | 55 | 20 | 75 | 45 | 25 | 95 | >95 | 4 | 5 |

2020F
 10/17



COLE GENESIS 86G FULL SIB TO LOT 7A AND SIRE OF LOTS 7B & 7C EMBRYOS



CJSL 4357B
DAM OF LOT 7B EMBRYOS



TMCK EARTH ANGEL 433E
DAM OF LOT 7C EMBRYOS

7A

4 CONVENTIONAL EMBRYOS

GRADE 1 EGGS

87% LIMOUSIN • RED/BLK • HOMO PLD

SIRE. HUNT TESTAMENT 40T
HUNT CREDENTIALS 37C ET
JKTW WHISKEY RIVER 985W

DAM. MRL X-RATED 014X
COLE MISS XRATED 354A
COLE MISS PRODUCTION 874U

| | CE | BW | WW | YW | MK | CEM | SC | DC | CW | RE | YG | MB | \$MTI |
|-------------|----|------|----|-----|----|-----|-----|----|----|------|------|-----|-------|
| SIRE | 15 | -0.4 | 71 | 110 | 36 | 11 | 1.4 | 17 | 40 | .70 | -.29 | .37 | 67.32 |
| DAM | 11 | 1.5 | 75 | 109 | 30 | 6 | .00 | 10 | 32 | 1.01 | -.30 | .53 | 74.17 |

7B

4 CONVENTIONAL EMBRYOS

FOUR GRADE 2 EGGS

68.5% LIM-FLEX • RED/BLK • HOMO PLD

SIRE. HUNT CREDENTIALS 37C ET
COLE GENESIS 86G
COLE MISS XRATED 354A

DAM. S A V HESSTON 2217
CJSL 4357B ET
AHCC XHIBIT THIS X045

| | CE | BW | WW | YW | MK | CEM | SC | DC | CW | RE | YG | MB | \$MTI |
|-------------|----|------|----|-----|----|-----|------|----|----|-----|------|-----|-------|
| SIRE | 17 | -0.9 | 81 | 120 | 33 | 11 | 1.10 | 19 | 40 | .81 | -.23 | .45 | 72.57 |
| DAM | 14 | 0.6 | 72 | 110 | 14 | 5 | .80 | 9 | 38 | .60 | -.09 | .52 | 71.41 |

7C

5 CONVENTIONAL EMBRYOS


ONE GRADE 1 EGG & FOUR GRADE 2 EGGS

65% LIM-FLEX • DBL BLK • HOMO PLD

SIRE. HUNT CREDENTIALS 37C ET
COLE GENESIS 86G
COLE MISS XRATED 354A

DAM. S A V PRIORITY 7283
TMCK EARTH ANGEL 433E
CEPB ZANGLE 107Z

| | CE | BW | WW | YW | MK | CEM | SC | DC | CW | RE | YG | MB | \$MTI |
|-------------|----|------|----|-----|----|-----|------|----|----|-----|------|-----|-------|
| SIRE | 17 | -0.9 | 81 | 120 | 33 | 11 | 1.10 | 19 | 40 | .81 | -.23 | .45 | 72.57 |
| DAM | 9 | 2.7 | 79 | 119 | 22 | 3 | 1.80 | 15 | 37 | .64 | -.10 | .20 | 61.92 |



This set of Simmental yearling bulls represents our commitment to not only to raising the very best 'beef' bulls we can offer the industry but, also our commitment to diversification and offering our valued customers a unique twist. Our production philosophy is simple - we aim to create a product that's reproductively sound, easy calving, high performance and mainstream acceptable. It's our goal that this group of yearling bulls on offer will translate not only into your program seamlessly, but the results of their breeding will also meet your customers' targets.

THE STEEL FOUNDATIONS

ENCORE

Tour

MONDAY

JANUARY 10, 2022

SCONLINESALES.COM

**SIMMENTAL
OFFERING**



101

METALLIC

TMCK 840J

3/3/2021 • 1/2 SIMMENTAL • DBL BLK • HOMO PLD • ASA: 3950522

SIRE. REMINGTON LOCK N LOAD 54U
W/C LOADED UP 1119Y

AUBREYS BLACK BLAZE III

DAM. EXAR UPSHOT 0562B
MAGS BETHANY ET

AUTO CARMINDA 656S

| | CE | BW | WW | YW | MCE | MILK | MWW | MB | REA | API | TI |
|--------|----|-----|----|-----|-----|------|-----|-----|-----|-------|------|
| EPD | 11 | 1.4 | 71 | 112 | 7 | 21 | 56 | .15 | 1.0 | 114.8 | 70.6 |
| % RANK | 55 | 70 | 65 | 60 | 35 | 65 | 70 | 85 | 5 | 80 | 80 |

FOCUS



FOCUS
416

102 HENDRIX

TMCK 845J

3/4/2021 • 1/2 SIMMENTAL • DBL BLK • HOMO PLD • ASA: 3950524

SIRE. W/C LOADED UP 1119Y
GEFF COUNTY O
RUBY NFF RHYTHM 475B

DAM. S A V PRIORITY 7283
TMCK EARTH ANGEL 433E
CEPB ZANGLE 107Z

| | CE | BW | WW | YW | MCE | MILK | MWW | MB | REA | API | TI |
|--------|----|-----|----|-----|-----|------|-----|-----|-----|-------|------|
| EPD | 7 | 2.2 | 78 | 118 | 3 | 18 | 57 | .01 | .83 | 103.3 | 69.0 |
| % RANK | 95 | 85 | 35 | 45 | 95 | 85 | 65 | 99 | 20 | 95 | 85 |



FOCUS

RUSH

103

TMCK 838J

3/1/2021 • 1/2 SIMMENTAL • DBL BLK • HOMO PLD • ASA: 3950521

SIRE.

REMINGTON LOCK N LOAD 54U

W/C LOADED UP 1119Y

AUBREYS BLACK BLAZE III

DAM.

EXAR UPSHOT 0562B

MAGS BETHANY ET

AUTO CARMINDA 656S

| | CE | BW | WW | YW | MCE | MILK | MWW | MB | REA | API | TI |
|--------|----|-----|----|-----|-----|------|-----|-----|-----|-------|------|
| EPD | 11 | 1.4 | 71 | 112 | 7 | 21 | 56 | .15 | 1.0 | 114.8 | 70.6 |
| % RANK | 55 | 70 | 65 | 60 | 35 | 65 | 70 | 85 | 5 | 80 | 80 |



FOCUS

104 pearl jam

TMCK 847J

3/7/2021 • 1/2 SIMMENTAL • DBL BLK • HOMO PLD • ASA: 3950523

SIRE. REMINGTON LOCK N LOAD 54U
W/C LOADED UP 1119Y
 AUBREYS BLACK BLAZE III

DAM. EXAR UPSHOT 0562B
MAGS BETHANY ET
 AUTO CARMINDA 656S

| | CE | BW | WW | YW | MCE | MILK | MWW | MB | REA | API | TI |
|--------|----|-----|----|-----|-----|------|-----|-----|-----|-------|------|
| EPD | 11 | 1.4 | 71 | 112 | 7 | 21 | 56 | .15 | 1.0 | 114.8 | 70.6 |
| % RANK | 55 | 70 | 65 | 60 | 35 | 65 | 70 | 85 | 5 | 80 | 80 |



105A

4 CONVENTIONAL EMBRYOS GRADE 1 EGGS

50% LIMOUSIN • DBL BLK • HOMO PLD

SIRE. REMINGTON LOCK N LOAD54U **DAM.** EXAR UPSHOT 0562B
W/C LOADED UP 1119Y **MAGS BETHANY ET**
AUBREYS BLACK BLAZE III AUTO CARMINDA 656S

| | CE | BW | WW | YW | MK | CEM | SC | DC | CW | RE | YG | MB | \$MTI |
|-------------|----|------|----|-----|----|-----|-----|----|----|------|------|-----|-------|
| SIRE | 15 | -0.4 | 71 | 110 | 36 | 11 | 1.4 | 17 | 40 | .70 | -.29 | .37 | 67.32 |
| DAM | 11 | 1.5 | 75 | 109 | 30 | 6 | .00 | 10 | 32 | 1.01 | -.30 | .53 | 74.17 |

106A

5 CONVENTIONAL EMBRYOS GRADE 1 EGGS

50% LIMOUSIN • DBL BLK • HOMO PLD

SIRE. W/C LOADED UP 1119Y **DAM.** MAGS Y-AXIS
GEFF COUNTY O 736E **TMCK APPLAUSE 301A**
RUBY NFF RHYTHM 475B TMCK CASUAL 28Y

| | CE | BW | WW | YW | MCE | MILK | MWW | MB | REA | API | TI |
|-------------|----|-----|----|-----|-----|------|-----|------|------|------|------|
| SIRE | 4 | 3 | 83 | 129 | 2 | 21 | 62 | -.13 | 1.10 | 11.5 | 71.6 |
| DAM | 11 | 2.4 | 78 | 129 | 5 | 26 | | .08 | .94 | | |

105B

3 CONVENTIONAL EMBRYOS THREE GRADE 1 EGGS

50% LIMOUSIN • DBL BLK • HOMO PLD

SIRE. REMINGTON LOCK N LOAD54U **DAM.** EXAR UPSHOT 0562B
W/C LOADED UP 1119Y **MAGS BETHANY ET**
AUBREYS BLACK BLAZE III AUTO CARMINDA 656S

| | CE | BW | WW | YW | MK | CEM | SC | DC | CW | RE | YG | MB | \$MTI |
|-------------|----|------|----|-----|----|-----|------|----|----|-----|------|-----|-------|
| SIRE | 17 | -0.9 | 81 | 120 | 33 | 11 | 1.10 | 19 | 40 | .81 | -.23 | .45 | 72.57 |
| DAM | 14 | 0.6 | 72 | 110 | 14 | 5 | .80 | 9 | 38 | .60 | -.09 | .52 | 71.41 |

106B

5 CONVENTIONAL EMBRYOS 4 GRADE 1 EGGS & ONE GRADE 2

50% LIMOUSIN • DBL BLK • HOMO PLD

SIRE. W/C LOADED UP 1119Y **DAM.** MAGS Y-AXIS
GEFF COUNTY O 736E **TMCK APPLAUSE 301A**
RUBY NFF RHYTHM 475B TMCK CASUAL 28Y

| | CE | BW | WW | YW | MCE | MILK | MWW | MB | REA | API | TI |
|-------------|----|-----|----|-----|-----|------|-----|------|------|------|------|
| SIRE | 4 | 3 | 83 | 129 | 2 | 21 | 62 | -.13 | 1.10 | 11.5 | 71.6 |
| DAM | 11 | 2.4 | 78 | 129 | 5 | 26 | | .08 | .94 | | |



MAGS BETHANY
DAM OF LOT 105A & 105B EMBRYOS



MAGS APPLAUSE 301A
DAM OF LOT 106A & 106B EMBRYOS

106C

4 CONVENTIONAL EMBRYOS GRADE 2 EMBRYOS

50% LIMOUSIN • DBL BLK • HOMO PLD

SIRE. W/C LOADED UP 1119Y **DAM.** S A V PRIORITY 7283
GEFF COUNTY O 736E **TMCK EARTH ANGEL 433E**
RUBY NFF RHYTHM 475B CEPB ZANGLE 107Z

| | CE | BW | WW | YW | MCE | MILK | MWW | MB | REA | API | TI |
|-------------|----|-----|----|-----|-----|------|-----|------|------|------|------|
| SIRE | 4 | 3 | 83 | 129 | 2 | 21 | 62 | -.13 | 1.10 | 11.5 | 71.6 |
| DAM | 9 | 2.7 | 79 | 119 | 3 | 22 | | .20 | .64 | | |



NATIONAL
Limousin SALE

SUNDAY

JANUARY 2, 2022

CATTLEMEN'S CONGRESS

OKLAHOMA CITY, OKLAHOMA



SELLING
FULL POSSESSION &
25% SEMEN INTEREST
COLE GENESIS 86G





1 GENESIS

COLE 86G

2/23/2019 • LIMOUSIN(87/77) • BLACK • HOMO PLD (P-1) • NPM2174722

SIRE. HUNT TESTAMENT 40T
HUNT CREDENTIALS 37C ET
 JKTW WHISKEY RIVER 985

DAM. MRL X-RATED 014X
COLE MISS XRATED 354A
 COLE MISS PRODUCTION 874U

| | CE | BW | WW | YW | MK | CEM | SC | DC | CW | RE | YG | MB | \$MTI |
|---------------|----|------|----|-----|----|-----|------|----|----|-----|------|-----|-------|
| EPD | 17 | -0.9 | 81 | 120 | 33 | 11 | 1.10 | 19 | 40 | .81 | -.23 | .45 | 72.57 |
| % RANK | 4 | 15 | 3 | 5 | 2 | 4 | 10 | 4 | 3 | 95 | >95 | 1 | 1 |

| | | |
|-----------|----------------|----------------|
| BW | Adj. WW | Adj. YW |
| 76 | 792 | 1394 |

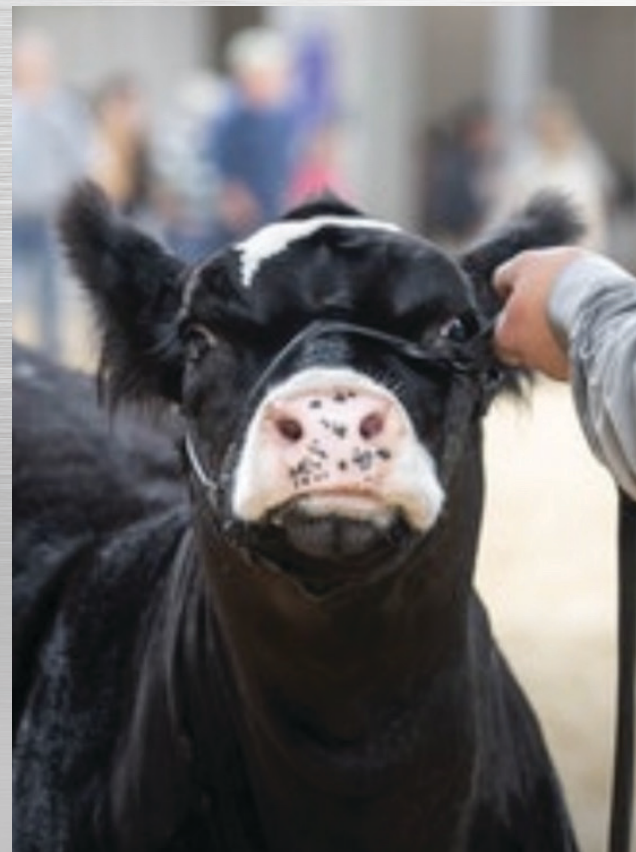
Tubmill Creek Farms has brought one of the most unique PUREBRED opportunities ever offered on auction in the Limousin breed! COLE Genesis is a coming 3 year old, elite herd sire in his prime that not only boast an impressive phenotype but, breed leading EPD's across the page. Worth noting, COLE Genesis was the top-selling lot in the Coleman Limousin Ranch 42nd Annual Bull Sale where he was appraised for a staggering \$80,000 valuation and was a member of the 2020 National Western Stock Show Grand Champion Limousin Pen of Three Bulls. He is the homozygous polled, purebred son of HUNT Credentials 37C and out of COLE Miss X-Rated 354A. When a bull of this caliber is able to not only look the part, but have a number profile that is this powerful, you take serious note. He has many chart-topping figures but, one worth special notation, is his marbling number which ranks among the very best in the purebred population. His birth to yearling spread is remarkable, coupled with a top 2% milk figure all but, assures the added value he projects to add to any progressive breeding program.

This is a rare opportunity to invest in a young sire that has cattlemen from across the nation in a frenzy!

SALE NOTES

STEEL FOUNDATIONS SALE AVERAGES

| | AVERAGE | GROSS |
|------------------------------|---------|-------|
| 6 Limousin & Lim-Flex Bulls | _____ | _____ |
| 1 Limousin Genetics Lots | _____ | _____ |
| 4 Sim-Solution Bulls | _____ | _____ |
| 2 Sim-Solution Genetics Lots | _____ | _____ |
| TOTAL SALE LOTS | _____ | _____ |





Gratitude.

We appreciate your support and unwavering confidence in our program.

Thank you for making our 2021-22 bull sales a success.

Submill Creek
FARMS



MC MARKETING MANAGEMENT
648 WEST SAWGRASS TRAIL
DAKOTA DUNES, SD 57049



THE STEEL FOUNDATIONS

HEADLINER
Tour

THURSDAY
DECEMBER 30, 2021
L365AUCTIONS.COM

ENCORE
Tour

MONDAY
JANUARY 10, 2022
SCONLINESALES.COM